

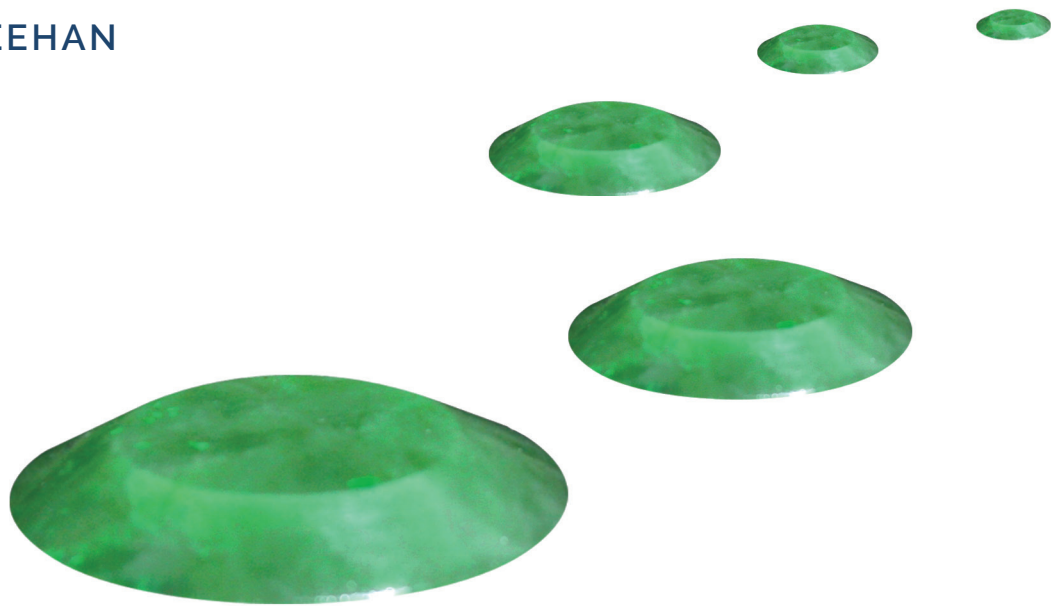


# SCULPTURE NEWS

December 2014

## WALKING THE LINE

JOE SHEEHAN



*Walk the Line (Impression) Joe Sheehan*

Joe Sheehan's work, *Walk the Line*, is moving at pace towards being installed in the new re-landscaped Cenotaph precinct.

Marking the original bed of the historic Wai Piro Stream, which once flowed down what is now Bowen Street across the precinct to the foreshore, will be Joe's 300 discs carved from a range of Nephrite types sourced from the West Coast of New Zealand, Australia, Canada, Russia, Mongolia, and China, and meandering stream-like through the precinct.

Under the discs a speaker system will provide the sound of a running

stream (all recorded from several stretches of water around e Ahumairangi /Mt Tinakori, which feed the Wai Piro stream).

The brief sent out to artists for the selection process was for the work to be compatible with and enhance the ceremonial function of the precinct at key times through the year, while marking the historic stream. Joe's work is an intelligent and sensitive response to this brief creating a ghost-like presence that talks to the site's pre-colonial location on the foreshore.

Joe is an exceptional artist whose meticulous craftsmanship

combined with a creative and poetic sensibility has created something truly special for this site.

*Walk the Line's* path within the Cenotaph area will be much travelled with the new Parliamentary steps included in the re-landscaping, opening up the precinct to Parliament's forecourt and the Beehive. The new square and sculpture will provide a compelling reason for people to linger there.

Joe is about to begin the sound recordings, and we are focussed on our continued fundraising to

## WALKING THE LINE

cont...

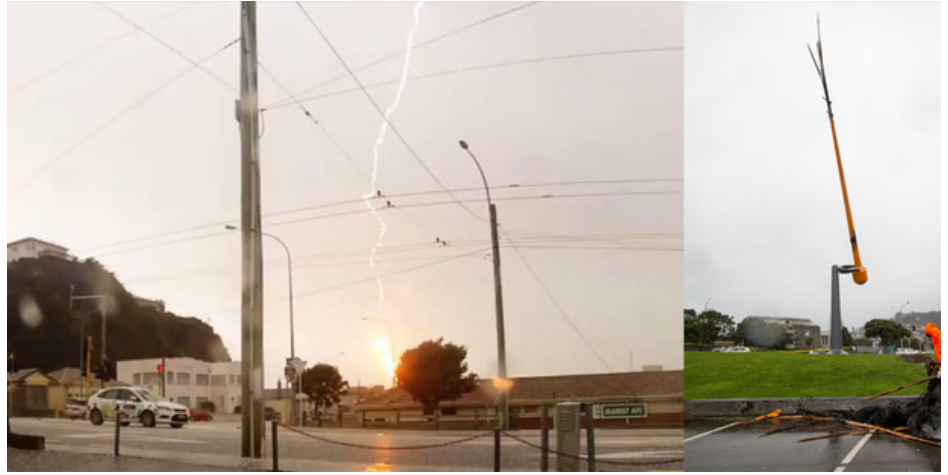
ensure the work is ready for the... 2015 WW1 commemorations and the opening of the new Cenotaph precinct.

We are delighted with the positive response to the work and our fundraising efforts to date with the Wellington City Council; Wellington Community Trust; Creative New Zealand; Wellington's family owned construction business, LT McGuinness; and long-time supporter of the Trust, Collin Post; all providing generous support. We are still \$25,000 short of our target and hopeful this will come in smaller amounts from our supporters and members. Donors for amounts over \$3000 will be recognised on the commemorative plaque at the site.

If you would like to contribute to this major artwork on a site of great significance please contact the Trust office for more information, or donations can be sent to: The Wellington Sculpture Trust, PO Box 195, Wellington 6140.

Sue Elliott

## HOLD ONTO YOUR HATS



2015 is going to be a busy year for the Trust, particularly in the first quarter. The year begins with our third visit to Gibbs Farm, Alan Gibb's private park in the Kaipara, rated among the world's top 10 sculpture parks.

Next, and to coincide with the opening of the newly re-landscaped Cenotaph precinct, we will be unveiling Joe Sheehan's work, *Walk the Line*, just prior to ANZAC Day.

In early May we will be unveiling Scott Eady's work, *The Philanthropist's Stone*, to celebrate the life and work of Thomas George Macarthy and the establishment of the T G Macarthy Trust 100 years ago.

While we mark the pre-colonial geography of Wellington and celebrate the philanthropy of one of our colonial citizens, we have also modernised our own ship. Early in the New Year we will have our new website up and running; designed to find our works, artists, walks and activities at a touch. It provides Information about our walks with downloadable maps including times, locations and terrain.

Good planning was no defence for the bolt of lightning that left *Zephyrometer*

tattered and torn. The work is now in Phil Price's studio and we hope to see it back in its rightful place in March/April next year. The response to its dramatic frying left us in no doubt it is a work much loved by its public. In true 21st century style, someone captured the moment of the explosion when the lightning struck. This went viral and just for a moment, *Zephyrometer* took a global bow.

Other activities over the last few months have included: an open call for proposals for our fifth 4 Plinths Sculpture Project; work on a concept for a sculpture on the waterfront; a possible temporary sculpture installation; the organisation of a Wellington version of the annual event PARK(ing) Day, Wednesday 11 March 2015; and planning for a symposium on public art.

2015 promises to be a busy one for the Trust and we would love to see you at as many of our events and activities as possible.

In the meantime I thank all our partners, supporters and members and wish you all a happy and safe festive season.

Sue Elliott | Chair

## eNEWSLETTER

Beginning in 2015 we will be sending out newsletters via email, as well as our twice yearly hard copies, to keep you more regularly informed. Please make sure we have your email address.

## 4 PLINTHS #5

They filled the Post Office box and kept the couriers busy: 33 proposals poured into the Trust in response to the call for submissions for the fifth round of the 4 Plinths Sculpture Project held biennially on the Waterfront by Te Papa.

Appraisal meetings of the Arts Advisers and the Trustees were both protracted and stimulated by the thought and creativity apparent in the range of entries. The result was the selection of four to be invited to take their proposal to the next level, which involves defining materials, specifications and lighting to a standard to meet building consent requirements.

The artists chosen are Wayne Youle and Iain Cheesman in collaboration (Canterbury/Auckland), Gregor Kregar (Auckland), Shane McGrath (Melbourne) and Kereama Taepa (Tauranga). Their advanced proposals are due to be submitted by late February 2015, after which the selection for installation in February 2016 will be made. Their responses to the challenging site are very diverse, ranging from reflections of a maritime

past to the new age of hi-tech communication.

The quality of the submissions in part reflects the increased fee payable to the selected artist. This started for the first round at \$20,000, and has been increased through subsequent rounds to \$30,000, but for this fifth round has been further raised to \$40,000. Our aim is to make this project one of the most significant temporary art installations in Australasia.

The on-going support of City Shaper, formerly Wellington Waterfront Ltd, and the Wellington City Council's Public Art Fund is key to enabling this.

The Trust plans to publicise the four final submissions as soon as these are received and before making its selection.

The Trust has stated that it could choose two or even three of these, which would mean they would be installed at two yearly intervals without the need to call for a further round of proposals.

Neil Plimmer

## GIBBS FARM – FRIDAY 13 FEB 2015

The busiest time of the year is fast approaching and for those of you who have been meaning to sign up for the Gibbs Farm Trip, this is a reminder to sign up now.

A visit to Gibbs Farm is an opportunity to see a world class collection of contemporary sculpture in a superb

location overlooking the Kaipara Harbour.

Alan Gibbs is continually adding exciting new work to the collection and every visit gives the visitor the chance to see something new and to appreciate with deeper insight the established works.

## SPONSORS

The Sculpture Trust conveys its warmest appreciation to its financial supporters

### TITANIUM PRINCIPAL DONORS



### BUSINESS PARTNERS



### NEON MAJOR DONORS

Collin Post

### MARBLE DONORS

Jane Kominik  
Richard T. Nelson

### STEEL DONORS

Gael Webster & Tim Brown, Susan & Alfie des Tombe, Garth Ireland, Jules Consultancy Ltd, Swan Legal Ltd, Jan Dowland, Avenal McKinnon, Merv Norrish, Ann Trotter, Philippa Williams, Nicola M J Young, Judith Trotter, Nicola Saker & Sir Mark O'Regan, Kelvin & Bronwyn Hale, Sir Michael & Lady Hardie Boys, Mark & Gillian Horton

## THE PHILANTHROPIST'S STONE

After a slow start focused on the complications of placing a work over four metres high in the heart of the central city, we have made great progress with the contractual, engineering and construction details for Scott Eady's, *The Philanthropist's Stone*.

The sculpture commemorates and celebrates the prominent Wellington businessman and philanthropist, Thomas George Macarthy, and the work of the Trust established on his death.

*The Philanthropist's Stone*, has (virtually) travelled up and down the lower Cuba Mall over the past six months with its site only recently confirmed as the one originally identified just up from the corner

of Cuba and Wakefield Streets. The locations uncertainty created by the large number of recorded and un-recorded underground utilities in the area.

The site is just up from the Civic Centre on the right-hand side and some 25m from the T G Macarthy building further along lower Cuba Street.

We will notify all our members of the function to unveil the work as soon as the date is confirmed in late April or early May 2015.

We thank the T G Macarthy Trust for their support and patience with this project and the open minds they brought to the sculpture and the Cuba Street site.

## DIRECTORY

### Vice Regal Patron

His Excellency Lieutenant-General The Right Honourable Sir Jerry Mataparae, GNZM, QSO

### Distinguished Life Member

Margaret, Lady Trotter

### Trustees

Sue Elliott (Chair),  
Vivien Atkinson, Richard Burrell,  
Jon Craig, Helen Cull QC,  
Helen Kedgley, Richard Nelson,  
Neil Plimmer MNZM,  
Ross Steele

### Arts Advisory Panel

Aaron Lister (Curator, City Gallery),  
Sarah Farrar (Curator Contemporary Art, Te Papa), Hemi Macgregor (Lecturer, Massey University),  
Chris Kelly (Architect, Architecture Workshop), Elizabeth Thomson (Artist),  
Jill Trevelyan (Manager of Art MFAT)

### Honorary Financial Advisor

Pat Sheehan (Director, Kendons Chartered Accountants)

### Honorary Auditor

Matthew Underwood (Chartered Accountant)

### Honorary Engineering Advisor

Ray Patton (Director, Clendon Burns and Park Ltd)

### Honorary Legal Advisor

John Nankervis (Consultant, Buddle Findlay)

### Wellington City Council Liaison

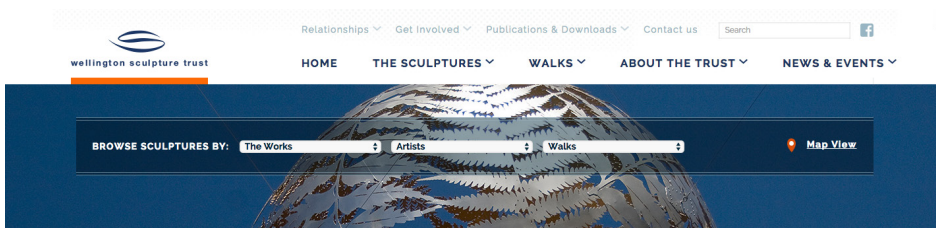
Natasa Petković-Jeremić (Manager City Arts)

### Administrator

Jhana Millers

## NEW WEBSITE

We are working with local design firm Tardis to redesign and redevelop our website, sculpture.org.nz. We hope to have it live before Christmas.



## THE SCULPTURES



wellington sculpture trust  
for a city of sculpture

Wellington Sculpture Trust  
Shed 6, Queens Wharf, Wellington 6011

PO Box 195, Wellington 6140

04 499 6644

wellingtonsculpture@xtra.co.nz

www.sculpture.org.nz